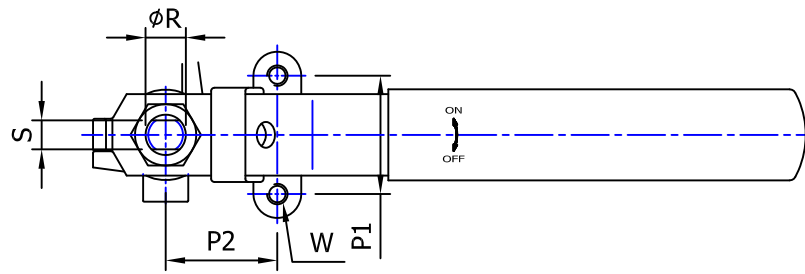


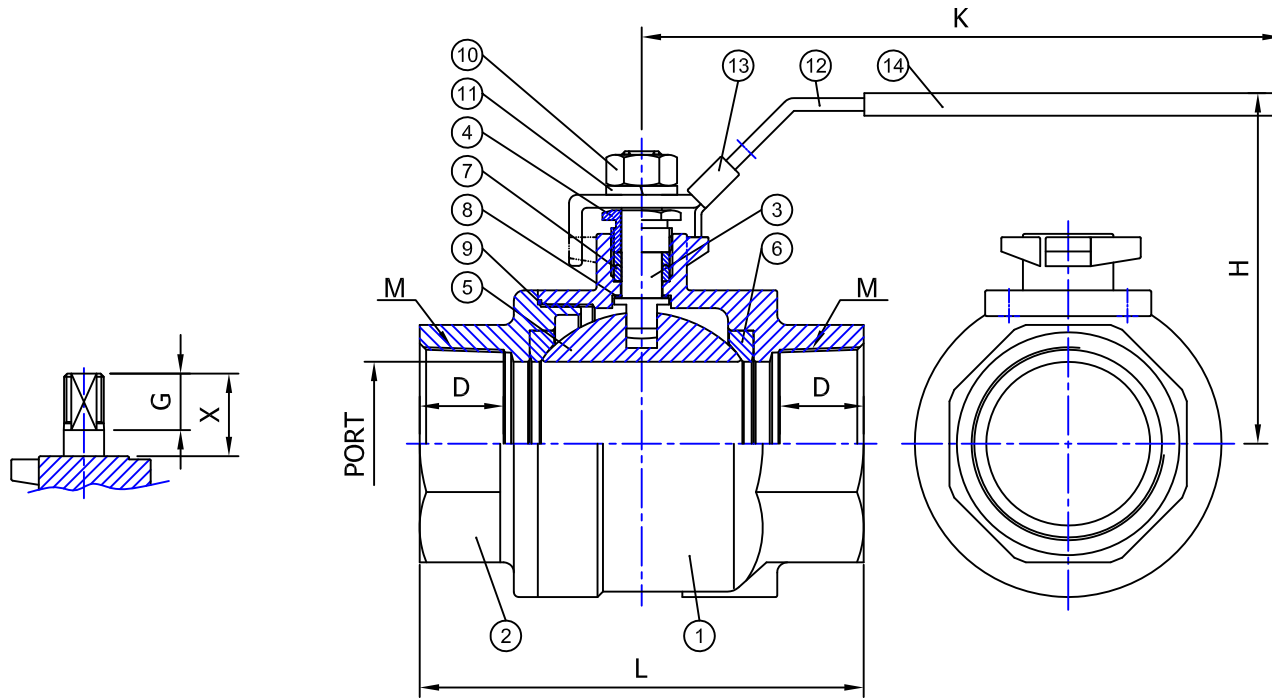
Fig No:

PB-2120C



MATERIAL LIST

NO.	PART NAME	MATERIAL		Q'TY
		STAINLESS STEEL	CARBON STEEL	
1	BODY	A351-CF8M	A216-WCB	1
2	END CAP	A351-CF8M	A216-WCB	1
3	STEM	SS316		1
4	GLAND NUT	SS304		1
5	BALL	A351-CF8M		1
6	SEAT	RPTFE		2
7	STEM PACKING	PTFE		1SET
8	THRUST WASHER	PTFE		1
9	BODY SEAL	PTFE		1
10	STEM NUT	SS304		1
11	SPRING WASHER	SS304		1
12	HANDLE	SS304		1
13	LOCKING PAD	SS304		1
14	HANDLE COVER	PLASTIC		1



DIMENSIONS

unit:mm

SIZE	PORT	D	L	K	H	S	R	G	X	P1	P2	W	M	CV	Torque (kgf-cm)	Weight (kgs)
1/4"	12.7	12.7	59	108	53.6	5	7.9	11.5	16	28.2	12.5	1/4-20UNC	NPT	21	32	0.32
3/8"	12.7	12.7	59	108	53.6	5	7.9	11.5	16	28.2	12.5	1/4-20UNC	NPT	25	32	0.32
1/2"	12.7	14	61	108	53.6	5	7.9	11.5	16	28.2	12.5	1/4-20UNC	NPT	25	32	0.32
3/4"	20	15.5	71	130	60.2	6.45	9.5	12.2	18	35	16	1/4-20UNC	NPT	68	60	0.50
1"	25	18	83	148.5	64.1	8	11.1	13.3	17.9	35	16	1/4-20UNC	NPT	110	140	0.82
1-1/4"	32	20	96.2	148.5	69.1	8	11.1	13.3	17.9	35	22.8	1/4-20UNC	NPT	185	180	1.22
1-1/2"	38	22	112.7	193	82.1	9.65	14.3	18	24.6	36.7	22.8	1/4-20UNC	NPT	270	280	2.00
2"	50	25	134	193	90.8	9.65	14.3	18	24.2	36.7	34.6	1/4-20UNC	NPT	490	540	3.36

Pressure VS. Temperature Chart

