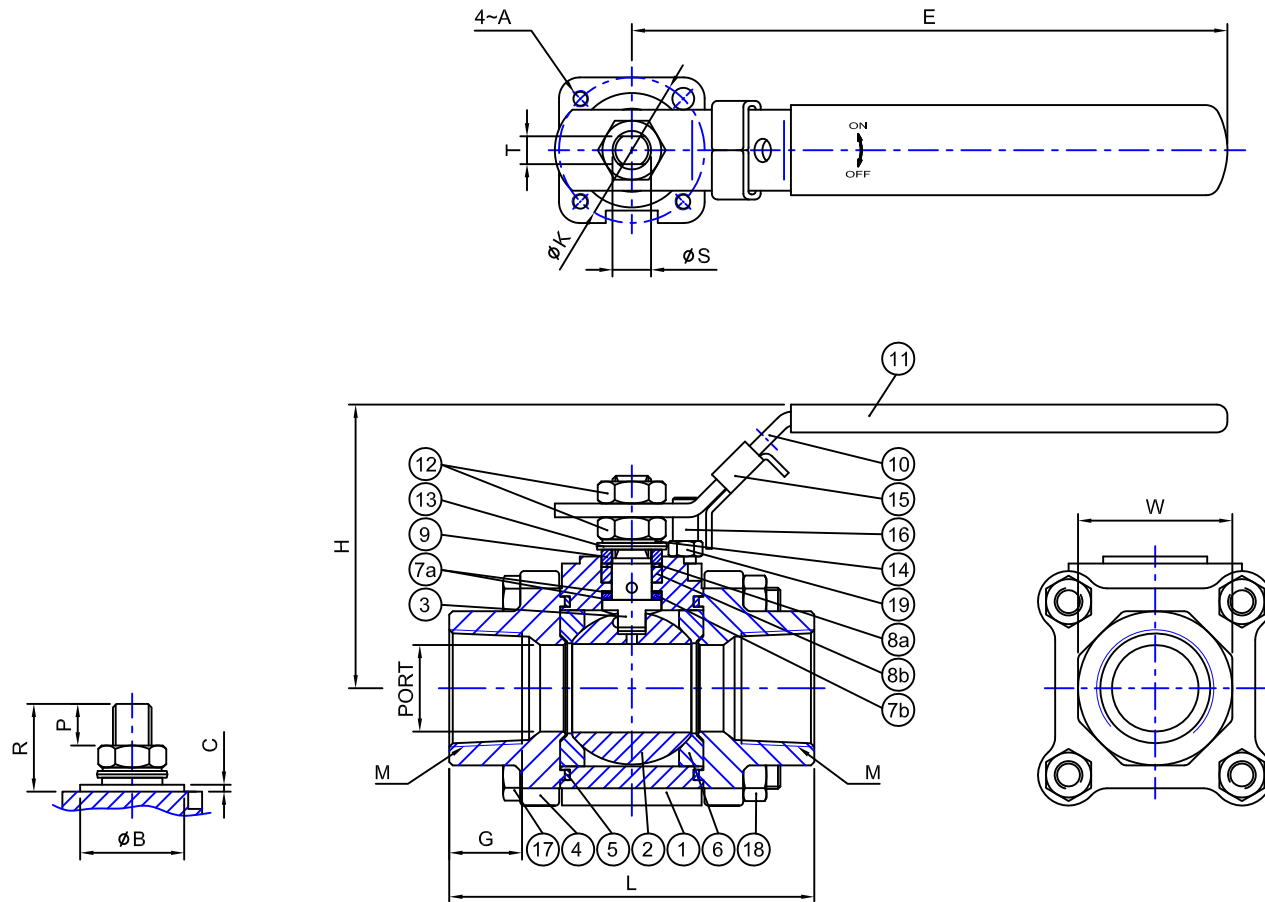


Fig No:

PB-3120



MATERIAL LIST

NO.	PART NAME	MATERIAL		Q'TY
		STAINLESS STEEL	CARBON STEEL	
1	BODY	A351-CF8M	A216-WCB	1
2	BALL	A351-CF8M		1
3	STEM	SS316		1
4	CAP	A351-CF3M	A216-WCB	2
5	GASKET	GRAPHITE		2
6	SEAT	RPTFE		2
7a	THRUST WASHER	RPTFE		2
7b	THRUST WASHER	GRAPHITE		1
8a	STEM PACKING	RPTFE	RPTFE+25%GF	1
8b	STEM PACKING	GRAPHITE		1
9	SLEEVE	SS304		1
10	HANDLE	SS304		1
11	HANDLE COVER	PLASTIC		1
12	THIN NUT	SS304		2
13	DISK SPRING WASHER	SS301		2
14	LOCK WASHER	SS304		1
15	LOCKING PAD	SS304		1
16	SET SCREW	SS304		1
17	BOLT	B8M	B7M	4
18	NUT	8M	2HM	4
19	SET NUT	SS304		1

*ITEM 19 DESIGN IS ONLY FOR 2"

DIMENSIONS

SIZE	PORT	L	G	E	H	K	W	M	S	T	A	B	C	P	R	CV	Torque (kgf-cm)	Weight (kgs)	ISO5211
1/4"	10	64.8	16	132.8	62.7	36	29.5	NPT	9.5	6.5	M5X0.8	25	0.5	6.7	8.6	22	55.3	0.72	F03
3/8"	10	64.8	16	132.8	62.7	36	29.5	NPT	9.5	6.5	M5X0.8	25	0.5	6.7	8.6	25	55.3	0.7	F03
1/2"	15	72.5	16.75	132.8	69	36	30	NPT	9.5	6.5	M5X0.8	25	2	8	16.5	37	74.9	0.84	F03
3/4"	20	85.4	18	132.8	73.5	36	36	NPT	9.5	6.5	M5X0.8	25	2	8.8	17.8	68	107.1	1.36	F03
1"	25.4	105.3	21	171.8	81.9	42	44.5	NPT	11.1	8	M5X0.8	30	2	12	25.3	109	160.7	2.06	F04
1-1/4"	32	111	22	171.8	86.9	42	54	NPT	11.1	8	M5X0.8	30	2	11.7	26	185	224.9	2.78	F04
1-1/2"	38	127.3	25	204.2	97.5	50	60	NPT	14.2	9.7	M6X1.0	35	2.2	15	31.7	268	374.7	4.06	F05
2"	50.8	145.2	27.2	212	127	70	73	NPT	19	12	M8X1.25	55	1.8	15.4	28.7	486	599.6	6.78	F07

unit:mm

